



Hydrogen water ionizer
TRIM ION NEO

■ Accessories



- Branch faucet connector and adapters
- Water intake hose (twin type) 1.5 m
- Drain hose (single type) 1.5 m
- Suction cup
- Hose fastening bands
- pH measuring kit

■ Water purification cartridge for replacement (sold separately)

PREMIUM

Micro-Carbon CM α Cartridge



■ Installation

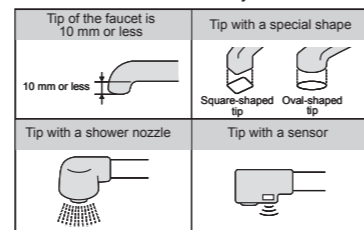
Adapters

It comes with a total of eight types of adapters, so it can be attached easily to all standard types of faucet.



Faucets that are not compatible

If you are using the following types of faucets, the included branch faucet cannot be attached. Additional work will be necessary.



*Please note that there are also irregular faucets and faucets with different thread diameter (less than 22 mm) or pipe diameter.

■ TRIM ION NEO Main Specifications

Rated voltage	AC 220 V
Rated frequency	50 to 60 Hz
Rated current	AC 2.5 A
Rated electrolytic voltage	DC 50 V (max.)
Power consumption	Approx. 260 W
Standby power consumption	Approx. 1 W
Electrodes (number of plates)	Platinum-tick coated titanium electrode (5 plates)
Generated water intake system	Two-way type
Electrolytic baths	4 baths (8 cells)
Rated intake	Electrolyzed hydrogen water: approx. 4 L/min (max.), Acidic water: approx. 4 L/min (max.), Purified water: approx. 5 L/min (max.)
Usable water pressure of piping system	50 kPa (minimum operating water pressure) up to 700 kPa
Weight	Approx. 3 kg
Power cord length	Approx. 2.7 m
Size	276 (W) X 248 (H) X 112 (D) mm
Water purification cartridge filtration capacity	It removes 22 substance.(removal rate of over 80%) It also can handle 7 tons of water. While it varies depending on the amount used amount and water quality and pressure, it lasts for approximately one year when used at a rate of 19 L/day.
Electrolytic baths washing method	Double auto-change cross-line method
Power supply circuit	Switching regulator control system
Protective functions	Fuse (built-in circuit board): 8A, branch faucet flow regulator valve, branch faucet warning valve (excessive water pressure prevention), constant current control circuit (overcurrent prevention device), overheating prevention device

*Specifications of this appliance are subject to change without notice, so some details may differ from the product. Thank you for your understanding.
*The color of the product shown is printed and may differ from the actual color.
*The product ratings and designs are subject to change without notice. Thank you for your understanding.
*It may not be possible to obtain sufficient pH levels in some regions due to water quality (groundwater). Please consult with the vendor before purchase.

⚠ Safety Precautions

Please read the instruction manual carefully and use the product correctly.

- The product is suitable for use only for drinking water.
- Do not run hot water exceeding 35°C through the main unit.
- Regularly monitor pH and do not drink water with a pH of 10 or higher straight from the tap.
- Do not drink the following types of water: (1) acidic water, (2) water from drainage hose (small pipe), (3) water with pH tester liquid.
- Do not take medicine with electrolyzed hydrogen water.
- The following persons should consult a doctor before drinking electrolyzed hydrogen water: (1) those who are undergoing medical treatment, (2) those with kidney damage, (3) those who are experiencing any health problems.
- If you notice any health problems, or if there is no improvement in symptoms after continued consumption, stop consuming and consult a doctor.
- The following persons should consult a doctor before using acidic water: (1) those with sensitive skin, (2) those with allergies
- If you notice any problems with your skin after using acidic water, stop using it immediately and consult a doctor.
- A pH around 9.5 (from pH9.0 to less than pH10) is recommended for drinking, but those drinking it for the first time should start with a small amount of level 1 hydrogen water.
- The recommended intake of electrolyzed hydrogen water is 500 to 1,000 ml per day.
- Generated water should be used as soon as possible after generated. When storing electrolyzed hydrogen water/purified water, keep it in a clean, airtight container like plastic bottle, store it in the refrigerator, and drink within two days.

Use the contact below to order our products or submit inquiries:

Member of Japan Business Federation (Keidanren), Head of Functional Water Foundation, Member of Japan Hospital Association Regular member of Japan Home-Health Apparatus Industrial Association

Applying the Results of Scientific Study on Water

First Section of the Tokyo Stock Exchange (Securities Code: 6788)

Nihon Trim, Co., Ltd.

Headquarters: Herbis ENT Office Tower 22F, 2-2-22 Umeda, Kita-ku, Osaka, 530-0001, Japan

Tel.: +81-6-6456-4600 (Main)

Branches: Sapporo, Sendai, Tokyo, Nagoya, Hiroshima, Kochi, Fukuoka
For other business offices, please see our website.

<https://www.nihon-trim.co.jp/>

■ Manufacturer and distributor
Trim Electric Machinery Co., Ltd.
1-5-2 Hotarugaoka, Nankoku-shi, Kochi, 783-0060, Japan



Find out more about Trim on the website

Nihon Trim Search

TRIM
NIHON TRIM CO.,LTD.



A new water-based approach to healthcare.



Continuous generation type hydrogen water ionizer

TRIM ION NEO

Water Health Care

A new water-based approach to healthcare.

Nihon Trim has developed new water ionizer.
To have a good design.
To be eco-friendly.
And to keep creating water that supports good health.
Every day, all the time.
Let's start a new water-based approach to healthcare.
A higher quality of life will begin with this water.

Precautions for use

- The product is suitable for use only for drinking water.
- If you have kidney problems, please consult a doctor before use.
- Please read the instruction manual carefully and use the product correctly.

A higher quality of life will begin with this water.

HEALTH

Keep creating water that supports good health.



ECO-FRIENDLY

An eco-friendly idea of using water ionizer.



STYLISH

TRIM ION NEO is a new-generation, high-performance water ionizer.



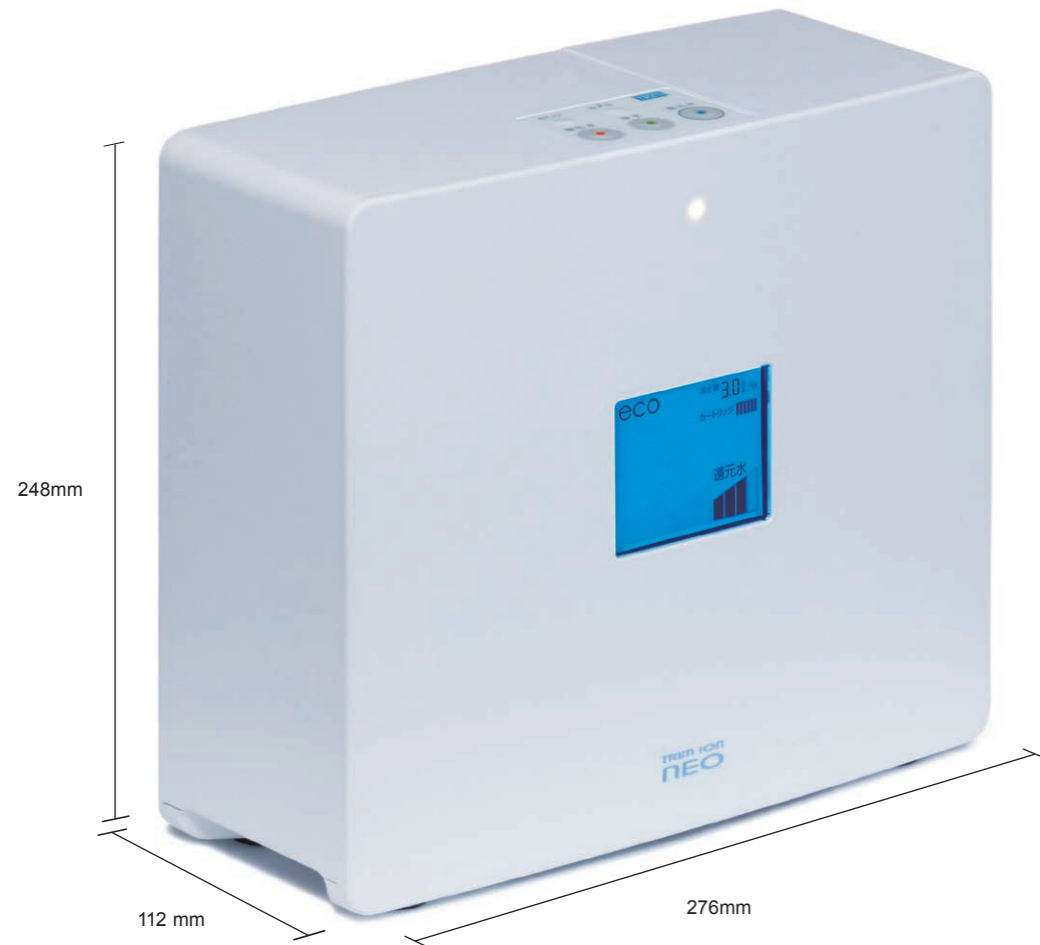
TRIM ION NEO

is a new-generation,
high-performance water ionizer.

Simple
&
Compact

Reliable water ionizer combining exceptional design and functionality.

If you are looking to start a better life, have one TRIM ION NEO per household.



Hydrogen indicator to indicate hydrogen generation

When generating electrolyzed hydrogen water, the hydrogen indicator on the LCD display will blink to notify you of hydrogen generation. It blinks faster when the hydrogen concentration is high and slower when the concentration is low.



Melody and light to indicate electrolyzed hydrogen water generation

A melody IC plays music during the generation of electrolyzed hydrogen water, indicating electrolysis. An LCD display also lights up in blue for electrolyzed hydrogen water generation, in green for purified water, and in orange for acidic water, making the kind of water being generated recognizable at a glance.



Save power consumption with Eco-Switch

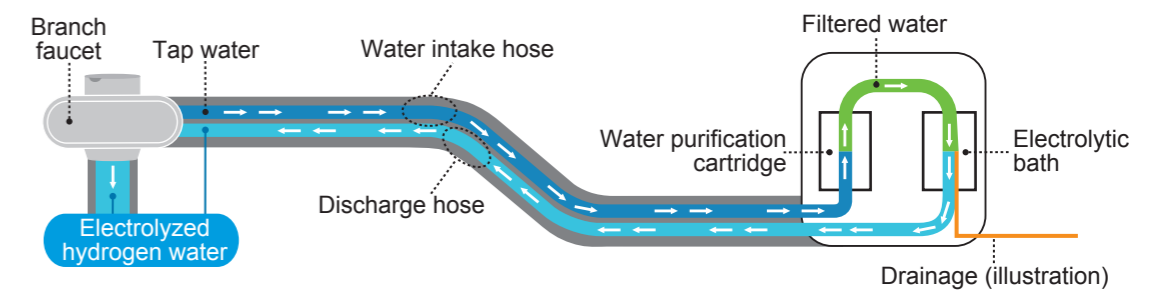
You can switch to the power saving mode (*electrolytic current approx. 70%, power consumption approx. 50%, compared to our products) using the Eco-Switch on the upper part of the main unit. This function is effective in hard-water areas or when the amount of water is too small and the pH value of electrolyzed hydrogen water rises too high. Power consumption during standby is as low as 1 W, providing eco-friendly water ionizer that constantly saves energy.



As this appliance generates electrolyzed hydrogen water in the main unit and runs water through the faucet, the main unit can be placed a little away from the kitchen sink.*

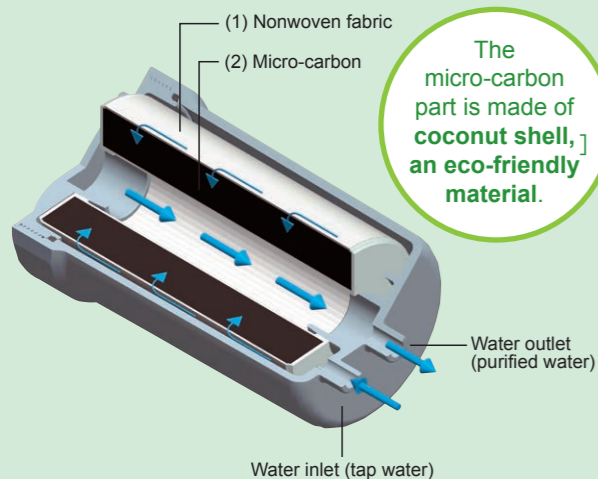
*Not exceeding the length of water intake and discharge hoses (1.5 m). It cannot be placed below the kitchen sink.

[During the generation of electrolyzed hydrogen water]



It removes 22 substances. It also can handle 7 tons of water.

PREMIUM Micro-carbon cartridge



The micro-carbon part is made of coconut shell, an eco-friendly material.

The micro-carbon cartridge is composed of a porous carbon material that has countless micro pores on its interior. It quickly absorbs dissolved solids and thoroughly removes even micro-particles such as turbidity. The new molding method makes it possible to remove 22 substances only with micro-carbon. The filter material is also recognized for its anti-clogging function and excellent water flow.

- (1) Nonwoven fabric
A sheet of fiber layers containing countless micro pores bonded in a 3D structure. First, large particles are removed here before passing through micro-carbon.
- (2) Micro-carbon (extremely fine activated carbon)
NSF-certified activated carbon (co-developed by Nihon Trim) is used for our Premium Micro-Carbon CMα Cartridge. NSF-certified activated carbon manufacturer/Product no.
• Kuraray Co., Ltd./T-SCO 60/150THM
• Futamura Chemical Co., Ltd./CN8200G

• When to replace the water purification cartridge varies depending on the amount of water filtration, water quality, water pressure, and other factors.
• The cartridge replacement indicator will turn on approximately one year after the first use of the product. Also, if the total water flow reaches approximately 7 tons, the cartridge replacement indicator will turn on within less than one year of the first use. Please replace the cartridge when the indicator turns on.

NSF certification

It is a standard regarding public health established by NSF International, which is a globally recognized nonprofit organization engaged in the protection of public health. To be certified, the product must meet strict test requirements.

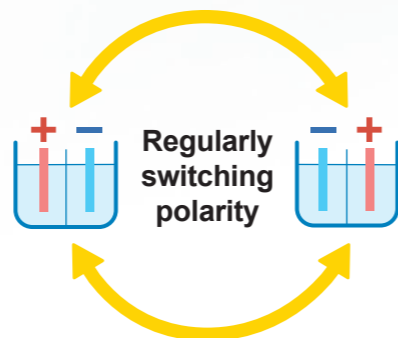
22 substances

(1) Free residual chlorine	(12) Soluble lead
(2) Turbidity	(13) 1,2-DCE
(3) Chloroform	(14) Benzene
(4) Bromodichloromethane	(15) Geosmin (mold smell)
(5) Dibromochloromethane	(16) Anionic Surfactants
(6) Bromoform	(17) Phenols
(7) Tetrachloroethylene	(18) PFOS and PFOA
(8) Trichloroethylene	(19) Iron (dissolved)
(9) Total Trihalomethane	(20) Iron (fine powder)
(10) CAT (agricultural)	(21) Dissolved manganese
(11) 2-MIB (mold smell)	(22) Aluminum (electrically neutral)

This is Nihon Trim's **UNIQUE** technology

It maintains stable electrolysis using the **double auto-change cross-line method**.

TRIM ION NEO uses electrolysis to generate electrolyzed hydrogen water, but in that process, minerals and other substances contained in the water are drawn to the electrode plates during the electrolysis. When the electrode plates are coated with these minerals (scaled), the electrolytic efficiency is reduced. TRIM ION NEO uses our unique double auto-change cross-line method, which switches the polarity of the electrodes and waterway at regular intervals to prevent the accumulation of minerals on the electrodes to maintain stable electrolysis.



Branch faucet equipped with safety features

If the water pressure is high or the water flow rate becomes excessive, water will be discharged from the warning valve on the branch faucet to notify the user.

Notification of replacement time and errors of water purification cartridge

This is a safety feature that manages replacement time and errors of the water purification cartridge by wireless communication, notifying you by lighting up the screen in yellow when the cartridge needs to be replaced and in red when there is an error.

Handles differences in water quality using a switching regulator control system

Nihon Trim employs a unique technology that automatically regulates the electrolysis process and handles variations in water quality due to seasonal and regional factors to generate electrolyzed hydrogen water that is always the same concentration. This control system uses environmentally-friendly technology that ensures efficient power conversion and effective use of electricity.

Effective use of electricity with high-efficiency electrolytic bath

By adopting a multilayer electrolytic bath separated in four layers and eight cells, it increases the efficiency of electrolysis and uses electricity effectively.

Up to 4 liters of electrolyzed hydrogen water intake per minute

TRIM ION NEO is compact yet offers high performance. Since the capacity is large with a rated current of AC 2.5 A (max.), up to 4 liters of electrolyzed hydrogen water can be taken per minute.

* When used with the incoming water pressure of the main unit (dynamic water pressure) of 180 kPa and the drainage volume adjustment lever is set as "Standard"

Bring more beautiful and higher quality water into your life

Electrolyzed hydrogen water is the answer

Electrolyzed hydrogen water is alkaline water containing hydrogen generated from cathodes by removing chlorine, lead, and other substances from tap water and then electrolyzing it. Small white bubbles that appear in the generated water are hydrogen bubbles generated by electrolysis. You can drink it as it is. Also, it is effective in improving gastrointestinal symptoms, so please give it a try if you are concerned about your morning bowel movements.

Electrolyzed hydrogen water

For drinking and cooking...



For cold-brew tea

Tea is well infused without boiling water.

For making green tea, black tea, and coffee

Good water brings out the full flavor of green tea, black tea, and coffee.

For cooking rice

When used for cooking rice, it makes rice fluffy and delicious.

For mixing with liquor

Water with minimal impurities changes the taste of liquor very little. You can also use it for making ice cubes.

Water for simmering and other dishes



It makes ingredients of simmered dishes plump and soft.

For removing bitterness from vegetables



It can be used not only for cooking but also for removing bitterness from ingredients.

For making broth for hot pot and other dishes



When used for making broth of kelp or bonito flakes, it makes the broth clear and gives a fine taste.

Usage examples and approximate pH value for each level of electrolyzed hydrogen water

Hydrogen level	Usage examples	Approximate pH value
Level 1 Drinking	When drinking electrolyzed hydrogen water for the first time	7.5~9.0
Level 2 Drinking	For regular drinking water and cooking rice	8.0~9.5
Level 3 Drinking	For regular drinking water, coffee, black tea, green tea, hot pot, soup, etc.	8.5~9.9
Level 4 Cooking	For simmered dishes and removing bitterness of ingredients	9.0~10.5

It is water that has 22 substances removed. You can use it for making baby formula and taking medicine. *See page 3.

Purified water

For making baby formula...



It is mildly acidic water, similar to skin. You can use it for washing your face and cleaning dishes.

Acidic water

For washing your face...



Applications and approximate pH value for each level of acidic water

Acidic water level	Usage examples	Approximate pH value
Level 1 Washing your face	For washing your face (It is mildly acidic and similar to skin.)	4.5~6.8
Level 2 Cleaning	For cleaning such as washing dishes	3.5~5.5

If you value health and the environment, we recommend you use TRIM ION's selectable water to enhance your daily life.

* At Nihon Trim, we define drinkable "alkaline electrolyzed water" containing hydrogen generated from cathodes by electrolysis as electrolyzed hydrogen water and "acidic electrolyzed water" generated from anodes as acidic water.